

# SPEC SHEET + MEASUREMENTS



## OGIO® Trainer Jacket. OE710

### Product photo



DESIGNED FOR ACTIVE PURSUITS LIKE RUNNING & CYCLING

WATER-RESISTANT

WIND-RESISTANT

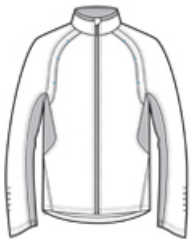
ULTRA-BREATHABLE

ZONED VENTILATION

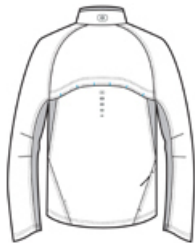
REFLECTIVE DETAILS

- 100% poly shell with inner knit collar
- 600MM fabric waterproof rating
- Articulated shaping for ease of movement
- Reflective OGIO heat transfer label for tag-free comfort
- Zip-through cadet collar
- Reflective O heat transfer at back neck
- Reflective stacked O heat transfers at center back and sleeves
- Mesh vents at shoulders with contrast bar tacks
- Reflective O pattern at black side panels and under arms
- Side-back zippered pocket for valuables
- Raglan sleeves with shaped cuffs and inside cuff elastic for comfort
- Slight drop tail hem with drawcord and toggle for adjustability
- Reflective O heat transfer at back left hem

### Sketches



front



back

### CARE INSTRUCTIONS

Machine wash cold with like colors, remove promptly. Only non-chlorine bleach when needed. Cool iron if needed. Do not dry clean.

# SPEC SHEET + MEASUREMENTS



OGIO® Trainer Jacket. OE710

## PRODUCT MEASUREMENTS

	XS	S	M	L	XL	2XL	3XL	4XL
Chest	19	20 1/2	22	23 1/2	25	26 1/2	28 1/2	30 1/2
Body Length at Front	27 1/4	28 1/4	29 3/8	30 1/2	31 5/8	32 3/4	33 3/8	34
Sleeve Length	35 1/4	36	36 3/4	37 1/2	38 1/4	39	39 3/4	40 1/2

**Chest:** Measured across the chest one inch below armhole when laid flat.

**Body Length at Front:** Measure from high point shoulder to lowest point of hem at front.

**Sleeve Length:** Start at center of neck and measure down shoulder, down sleeve to hem.

## SIZE CHARTS

	XS	S	M	L	XL	2XL	3XL	4XL
Chest	32-34	35-37	38-40	41-43	44-46	47-49	50-53	54-57

## HOW TO MEASURE



### CHEST

Measure under the arm and around the fullest part of the chest with arms down, keeping tape horizontal.

# SPEC SHEET + MEASUREMENTS



OGIO® Trainer Jacket. OE710

## COLORS

---



Blacktop/  
Black/  
Reflective  
PMS BLACK  
C